



John Doggart Chairman SEA

www.superhomes.org.uk



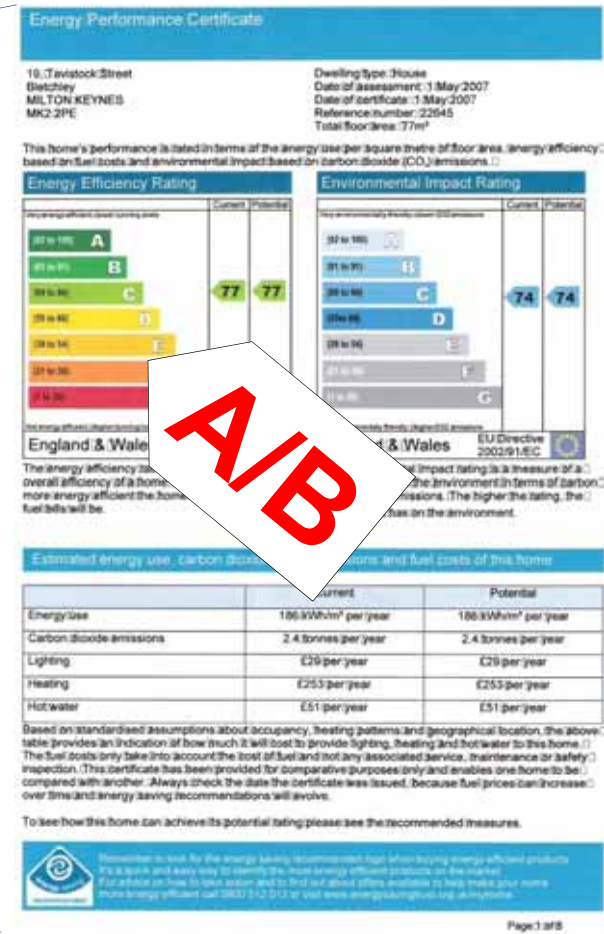
Exemplars Inspire Visitors



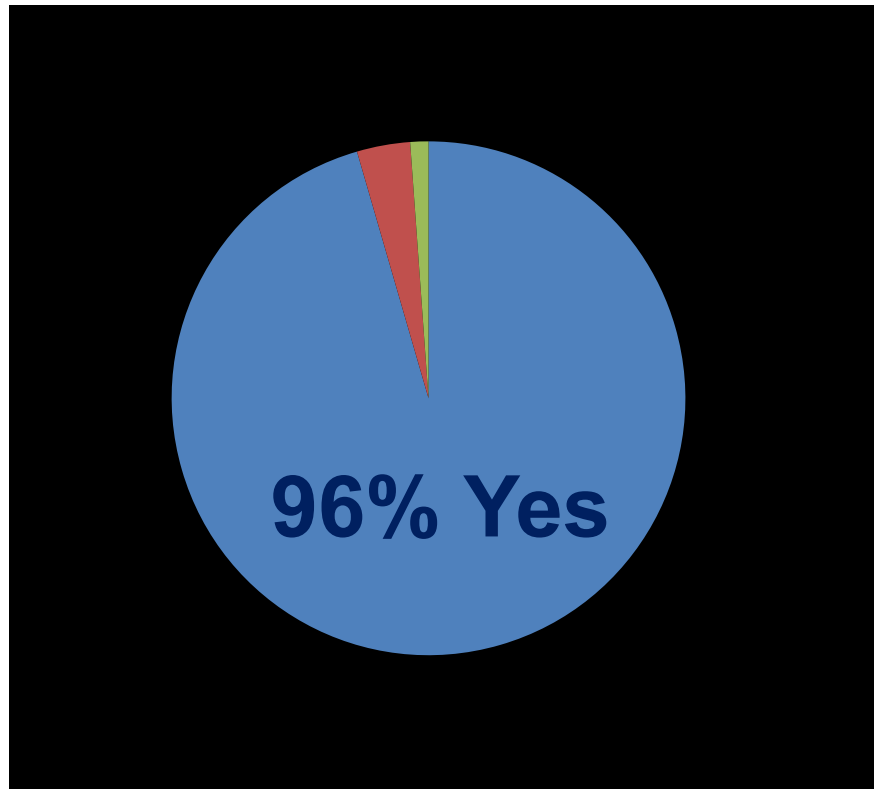
What is a SuperHome?

- **Exemplar house retrofitted to save at least 60% carbon & energy**
- **Accessible for the public to learn and be inspired from a trusted source**
- **Touch and feel experience**
- **Shows the end of the journey**
- **Shows benefits such as comfort, security and improved value**

12% rise in house value



96% of visitors say that Touch-and-Feel visits are a good way of learning



98% are pleased that they came

Belsize Park



**Public & Private
realms**



What we did with our house?

Saved 70% of our energy

- **Insulated and reduced draughts**
- **More efficient heating system**
- **Low energy Lights and Appliances**
- **Monitored and Controlled fuel use**

Internal Insulation at the front



External Insulation at back



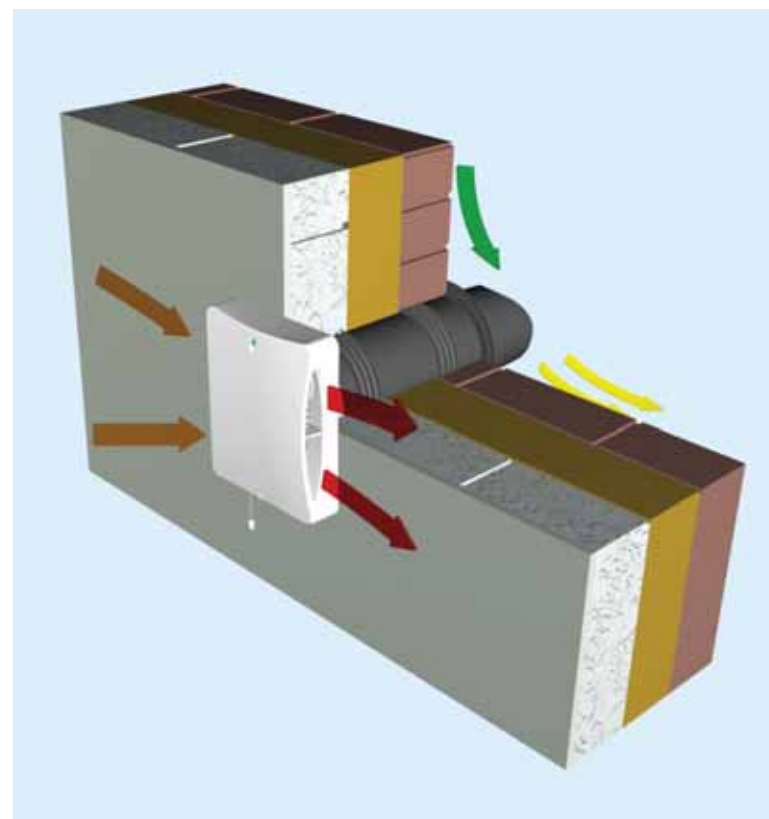
Flat Roof “Upside Down” Insulation



- **Overhauled front windows**
- **High performance rear windows**



Ventilation Heat recovery fans in Kitchen & Bathrooms



Efficient Boiler and Controls

A third of radiators not needed



Used low energy
Appliances, or avoided
them altogether



Low Energy and LED lighting fitted throughout



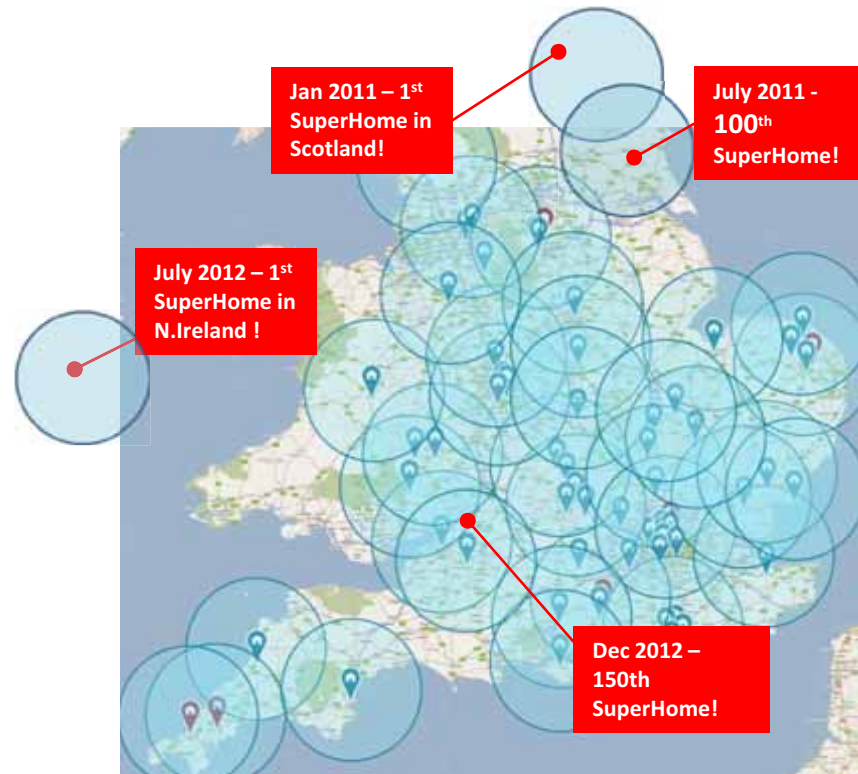
Energy monitored and controlled



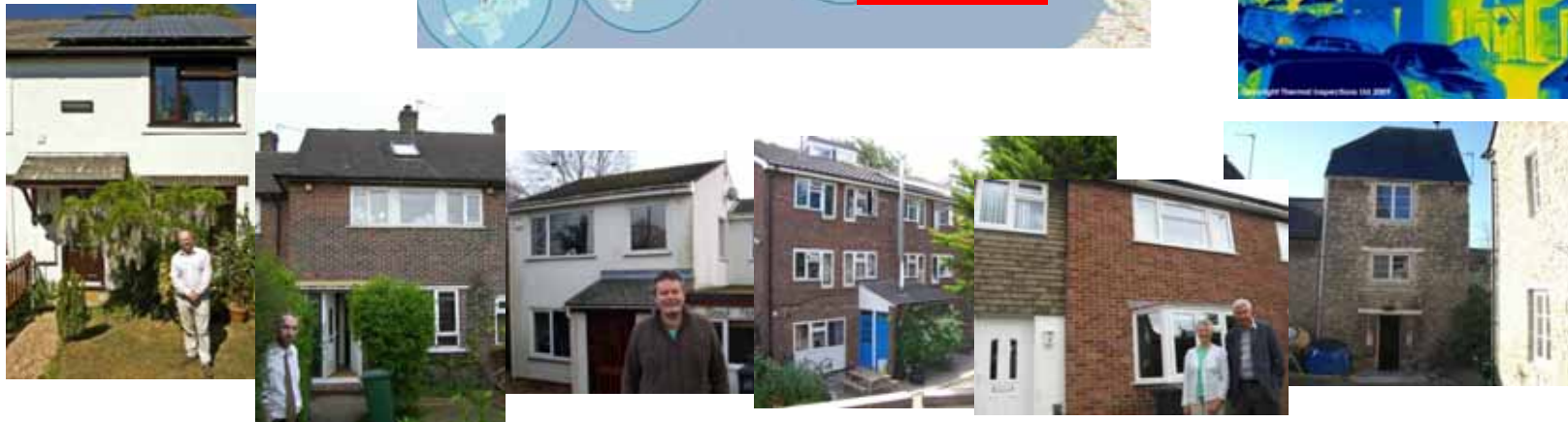
Other environmental issues addressed e.g. water saving

There's a SuperHome near you

Over **90%** of the population is within 40 minutes of a SuperHome



A SuperHome refurbishment cuts CO2 emissions by over **60%**



The Superhome Alliance

- **Currently 180 houses throughout country, 15 within 2 miles of here**
- **15,000 site visitors & 180,000 web visitors per year**
- **37 Video Fly-throughs**
- **25% want help with their projects**
- **Aiming for 200 Superhomes by end of the year**

Camden SuperHomes



Open Days



Houses are very popular, Camden averaged 120 visitors every Sunday (155 to my own house in a weekend)

How to sustain your network?



**FEDERATION OF
OPEN HOME
NETWORKS**

- **Fundraising for members**
- **Organisation run by the members**
- **10 organisations, over 900 dwellings**
- **More joining every month**

Thoughts and Tips

- **Always think of the homeowners view**
- **Make both home owners happy**
- **A good booking system is vital**
- **A good facts sheet makes for happy visitors**
- **Include a SuperHome in your network**
- **Contribute to MyGreenBuilder**
- **Ensure a sustainable future now: join the Federation**



John Doggart Chairman SEA

www.superhomes.org.uk

